

CHARLESTONTM HOME + DESIGN

OUR 10TH YEAR

SPRING 2009

AN INTERVIEW WITH **LENNY SCHLOSS**

Inside the Tennis Pro's Mt. Pleasant Home

LOWCOUNTRY OUTDOOR LIVING GUIDE

15 CHARLESTON DREAM BATHS



p. 141
**IDEA
HOUSE**
update



Homeowner Terry Reed (left) with Interior Designer Lorraine Vale (right)

Creative Expressions

Interior Designer Lorraine Vale of House Interiors draws inspiration from the sprawling river views as she tackles the design of this 10,000 square foot home from start to finish.



Interior Designer's Notebook

My initial meeting with the homeowners, Terry and Fred Reed, was in September of 2005. At that point, the project of building a 10,000 square foot home in the Rivertowne subdivision of Mt. Pleasant was still on the drawing board and would not break ground for another year. In addition to being introduced to the floor plans, Terry and Fred produced a list of artwork they wished to consider during the planning stage. With the children almost gone from the nest, they were planning their future lifestyle, envisioning this house

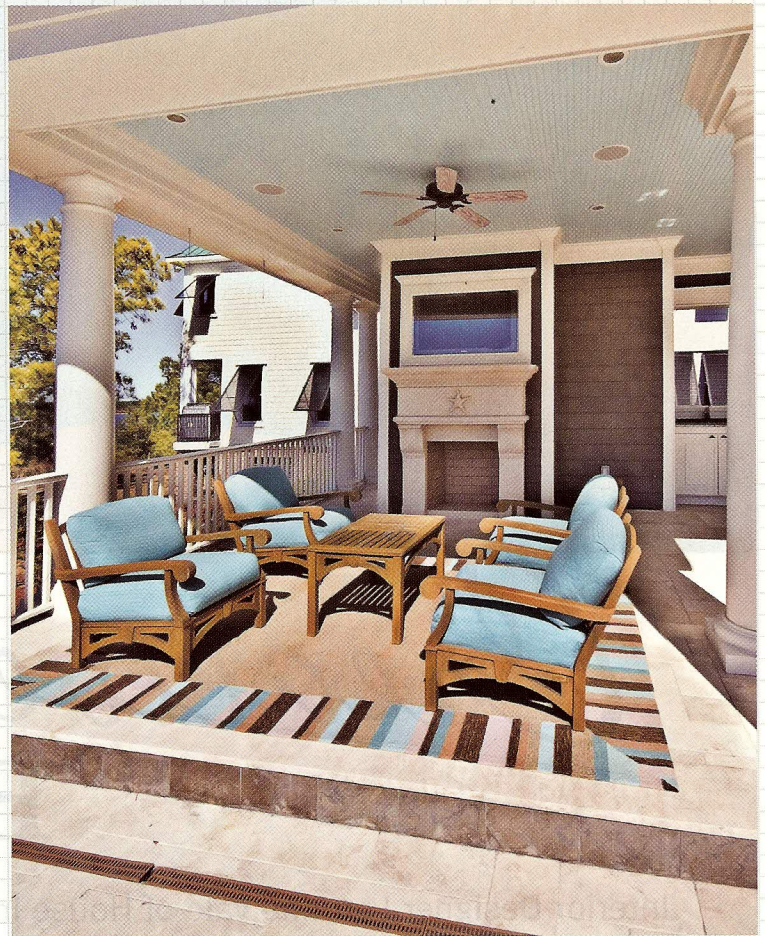
for frequent entertaining and plenty of relaxation. Not wanting to leave out anything that would help them attain a happy life here in Charleston, Terry shared a diary of design elements she loved as she worked her way through hundreds of shelter magazines. My company, House Interiors, was brought on board to assist the homeowners with all aspects of selections and design decisions as the project progressed through construction, while they remained in Charlotte, NC. All communications between the builder, homeowners, and House Interiors was conducted via email or phone. The builder

required that all permanent selections for the home be made prior to breaking ground in October of 2006, thus our plan of action was based strictly according to the construction schedule.

With Terry and Fred in town from Charlotte for the first of many visits, we began the preliminary round of selections. First were the brick, mortar, and siding for the exterior of the house. Next, the homeowners and I conducted the initial electrical walk-through over the phone as we each consulted our copies of the floor plan, which was then followed up on site with the builder.

Terry and Fred planned a second trip to Charleston in which we worked for four

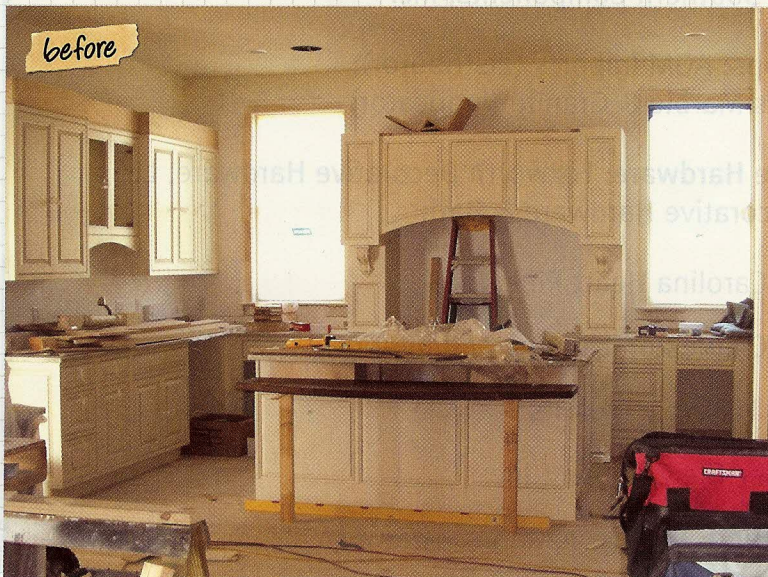
(below) This impressive two-story entry features a unique chandelier from Charleston Lighting & Interiors and 200 year old river reclaimed hardwood floors.



(above) These oversized outdoor chairs are perfect for relaxing, chatting with friends, or watching the integrated HDTV, all while enjoying a cozy fire on cool nights. Notice how the bright blue seat cushions echo the traditional Charleston haint blue beadboard ceiling.



From the bare colorless room below, this horseshoe-shaped kitchen transformed into a gourmet space brimming with high-end products and finishes.



AT A GLANCE

Interior Designer: Lorraine Vale, Allied Member ASID, owner of House Interiors

Project: new construction home with a total of 10,000 square feet

Location: Rivertowne, Mt. Pleasant

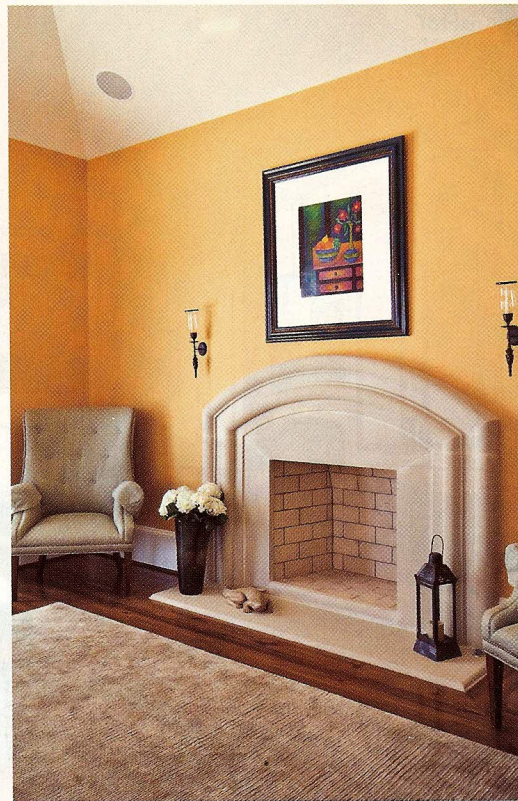
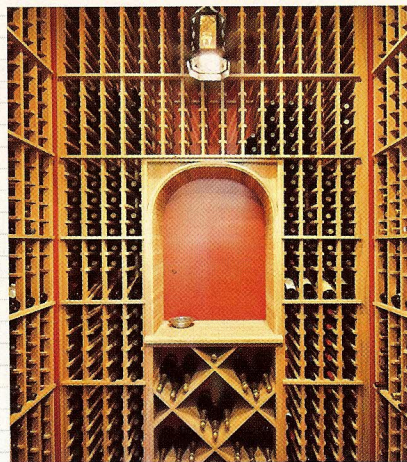
Highlights: water views of Wando River, infinity edge pool, high-end outdoor kitchen, whole house audio/video distribution, elevator, river reclaimed hardwood floors, professional grade kitchen, media room, wine room with 1000 bottle capacity, home office with adjoining screen porch, guest apartment with kitchenette and living area, exercise room with cork floor, master suite with marble bathroom

days straight making selections. Terry and I selected plumbing fixtures at Moluf's, which is no small feat when you have to consider thirteen different areas with sinks, showers, tubs, etc. Lighting selections took more than one visit to Charleston Lighting & Interiors, as did the granite, marble, and bathroom tiles. On subsequent visits we selected cabinetry, decking, and pool tile. The appliance selection was done by the homeowners months before breaking ground. For the hardwood flooring, Terry and Fred knew they wanted to use 200 year old, river reclaimed wood that was discovered during construction of a new marina in Cape Fear, NC. Fortunately, the source could provide enough wood to cover the 5000 square feet needed for the home.

My overall vision for this home was to draw your eye into the space as you enter the foyer and toward the seductive views out to the pool, down the dock, and to the river where you will discover a 'live' Lowcountry painting. When the builder was ready for paint colors, I used a palette in varying shades of white as to not distract from, but rather emphasize, the beauty outside. Luckily, Terry and Fred shared this same vision. For other areas of the home, I used colors that reflected function and personality to produce a pleasing palette throughout.

After many building site visits and meetings with the homeowners, builder, and vendors to refine our selections, the home was completed in April of 2008. This is an intimate, albeit large, family home that reflects the taste and personalities of Terry and Fred. It was truly a pleasure to work with a couple that respected their design professional, was confident in their decisions, and focused on the end product throughout the entire process. It was my privilege to work with them as we brought their dream together. ❖

For more information contact Lorraine Vale at (843) 216-2002 or visit houseint.com.



(clockwise from top left) An elegant wine room with cork floor and 1000 bottle capacity sits nestled in a hallway just off the kitchen. This cheery sunroom offers the perfect place to cozy up with a book and provides immediate access to the pool area outside. An inviting infinity edge pool overlooks the Wando River in the distance.

RESOURCE GUIDE

Appliance Brands: Sub-Zero, Wolf, Bosch, Frigidaire, Sharp

Cabinets: Southern Components, Inc.

Countertops: AGM Imports (distributor);
Eugene's Marble & Granite (fabricator)

Decorative Hardware: Foxworth Decorative Hardware, LLC;
Bird Decorative Hardware & Bath

Flooring: Carolina Heart Pine, Inc.

Lighting: Charleston Lighting and Interiors

Plumbing Fixtures: Moluf's

Tile: Melcer Tile Company, Inc.

Wall Covering: Benjamin Moore, Sherwin-Williams